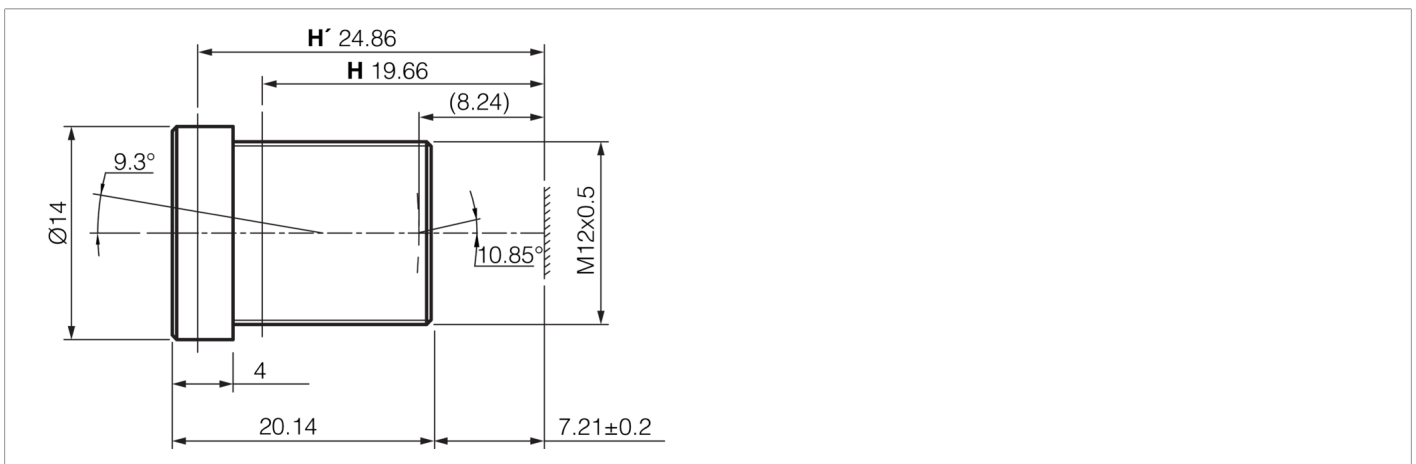


213100
O-S1-S-250-40
Lens

- IR-cut filter coating
- Light shutter
- High resolution
- Robust design


Technical data (typ.)
+20°C

| | |
|------------------------|--------------------|
| Length | 20.14 mm |
| Diameter | Ø 14 mm (Diameter) |
| Lens connection | S-mount |
| Filter thread | M12 x 0.5 |
| Wavelength | 400 ... 950 nm |
| Focal length | 25 mm |
| Aperture (F) | 4.0 |
| First principal plane | 19.66 mm |
| Second principal plane | 24.86 mm |
| Angle of view (object) | 9.3° |
| Angle of view (image) | 10.85° |
| Aperture type | Fixed |
| Sensor size | 1/2" |
| Resolution | 3 Megapixel |
| Working distance | endless |
| Temperature resistance | -20 ... +65 °C |

More information / accessories

<https://www.di-soric.com/213100>