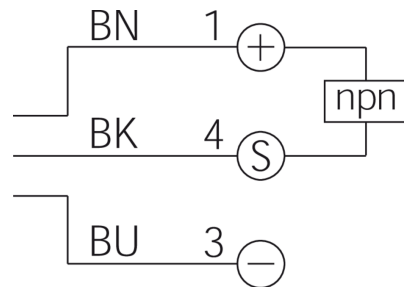
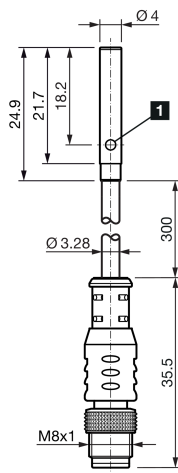
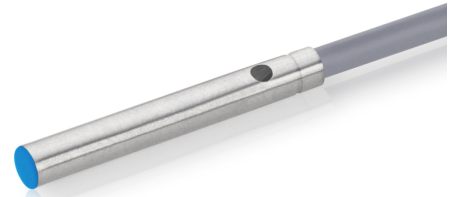




**210441**  
**DCC 4.0 V 0.8 NSK-K-TSL**  
**Inductive proximity sensor**

- Stainless steel housing
- Highly flexible cable
- Metal connector
- Integrated amplifier
- Short-circuit protection
- Starting pulse suppression
- LED



1) LED

BK: black

BN: brown

BU: blue

**Function**



**Technical data (typ.)**

**+20°C, 24 V DC**

Service voltage	10 ... 30 V DC
Internal power consumption	< 10 mA
Insulation voltage endurance	500 V
Installation type	Flush
Diameter	Ø 4.0 mm (Diameter)
Housing length	24.9 mm
Housing material	Stainless steel (AISI303)
Material of cable	Polyurethane
Material of sensor probe	PBT
Protection class	III, operation on protective low voltage
Operating principle	inductive
Evaluation	digital
Design	Cylinder
Product series	INM-100 Miniature
Switching output	npn, 100 mA, NO
Voltage drop (max.)	1.5 V (100 mA)
Switching distance (SN)	0.8 mm
Standardized measuring plate	4 x 4 x 1 mm
Switching hysteresis (max.)	1 ... 20 %
Switching frequency	5000 Hz

**210441****DCC 4.0 V 0.8 NSK-K-TSL****Inductive proximity sensor****Technical data (typ.)****+20°C, 24 V DC**

Ambient temperature during operation

-25 ... +70 °C

Protection type

IP 67

Connection

Pigtail, 0.3 m, M8, 3-pin, A-coded

Connection cable

TK ...

**More information / accessories**<https://www.di-soric.com/210441>