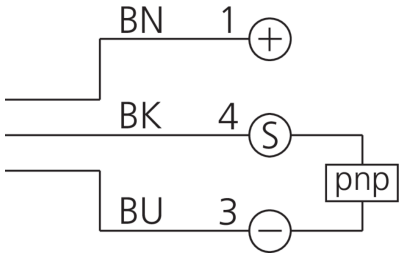
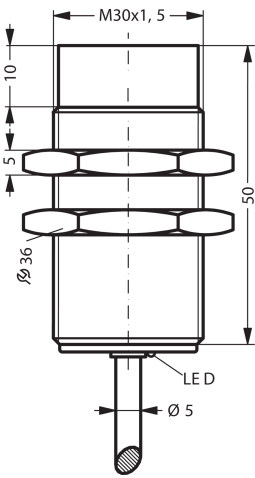
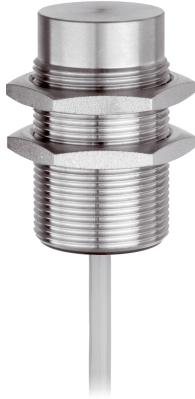




207552
D7C 30 V 40 POLK/10MPUR
Inductive proximity sensor

- Closed, all-steel sleeve
- 3-times the standard operating distance
- Same operating distance to steel and aluminum
- Housing and sensing face made of stainless steel
- Insensitive to aggressive cleaning agents, environmental influences and hot filings
- Highly flexible cable
- Integrated amplifier
- Short-circuit protection
- Starting pulse suppression
- LED



1) LED 2) Width over flats 36 mm BK: black BN: brown BU: blue

Function											
											 

Technical data (typ.)	+20°C, 24 V DC
Service voltage	10 ... 30 V DC
Internal power consumption	< 12 mA
Insulation voltage endurance	According to IEC 60947-5-2 (7.2.3.1)
Installation type	non-flush
Thread	M30 x 1.5
Housing length	51 mm
Housing material	Stainless steel
Material of cable	Polyurethane
Tightening torque	150 Nm
Protection class	III, operation on protective low voltage
Operating principle	inductive
Evaluation	digital
Design	Thread
Characteristics	extremely high operating distance, < 40 bar, Full-metal casing closed
Product series	INW-300 Full metal extended
Switching output	pnp, 200 mA, NC
Voltage drop (max.)	2 V
Switching distance (SN)	40 mm
Standardized measuring plate	120 x 120 x 1 mm
Switching hysteresis (max.)	15 % (5 % typ.)



207552

D7C 30 V 40 POLK/10MPUR

Inductive proximity sensor

Technical data (typ.)	+20°C, 24 V DC
Switching frequency	100 Hz
Ambient temperature during operation	-25 ... +70 °C
Protection type	IP 69K
Connection	Cable, 10.0 m (flying leads)
More information / accessories	https://www.di-soric.com/207552