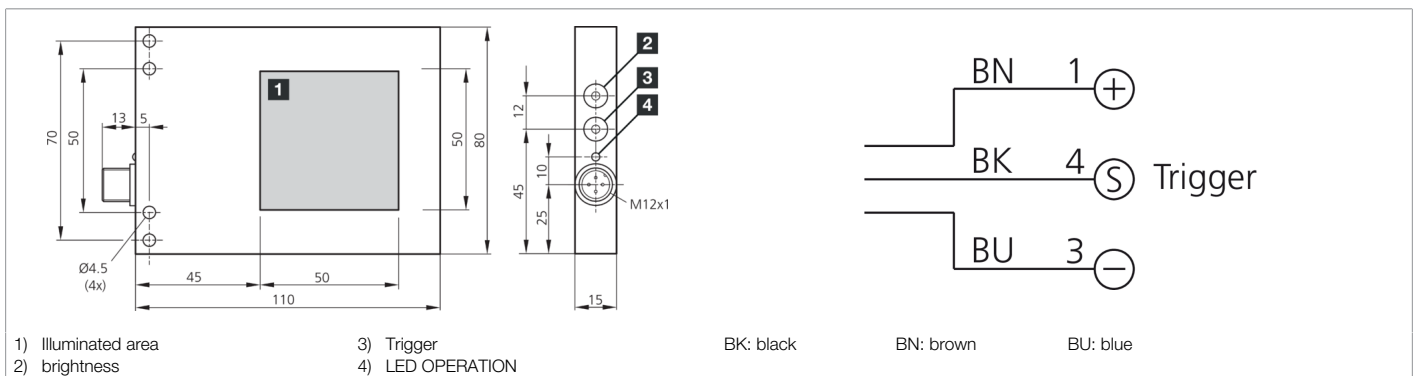
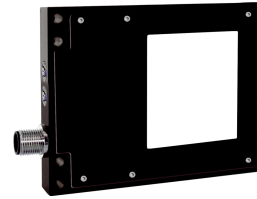




206803
BEK-F50/50-G0TI-IBS
Area light

- Constant level of light intensity over the entire voltage range
- Homogeneous luminous field
- High efficiency
- Light intensity can be adjusted



Function													

Technical data (typ.)	+20°C, 24 V DC
Service voltage	15 ... 35 V DC (Supply Class 2)
No-load current (max.)	160 mA (24 V DC)
Power	3.9 W (24 V DC)
Inverse polarity protection	Yes
Illuminated area	50 x 50 mm
Housing material	Aluminum (Black, Anodized)
Material	PC, opal diffuse (Protection optics)
Protection class	III, operation on protective low voltage
Risk group (DIN EN 62471)	Free group
Approvals	UL
Design	Area light
Characteristics	Trigger input
Trigger input high level	3.3 ... 35.0 V
Trigger input low level	< 2.8 V
Light source	LED
Color	Infrared
Wavelength	850 nm
Deflection angle FWHM	120°
Control	Integrated power control
Display	LED Green - Operating display
Shock/vibration load	30 g, 11 ms / 10 ... 55 Hz, 1.0 mm
Ambient temperature during operation	0 ... +40 °C
Protection type	IP 67
Connection	Connector, M12, 3-pin
Connection cable	VK ...



206803

BEK-F50/50-G0TI-IBS

Area light

[More information / accessories](#)

<https://www.di-soric.com/206803>