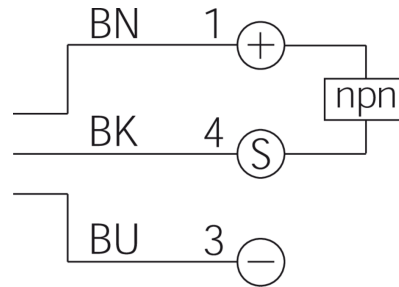
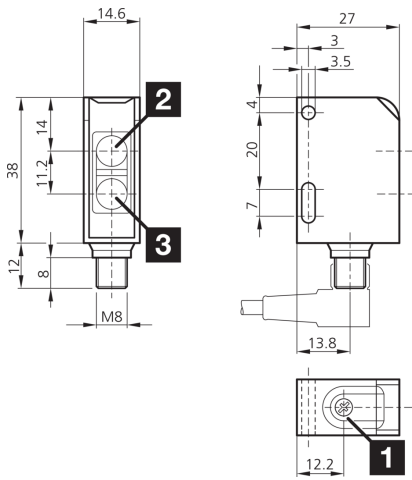




206207
OR 6-41 K 4 N1-T3
Retroreflective sensor

- Long range
- Visible red light with small light spot
- Polarization filter
- Sensitivity is adjustable
- Compact design
- Universal mounting
- LED switching status display



1) Potentiometer
 2) Optical axis (R)

3) Optical axis (T)

BK: black

BN: brown

BU: blue

Function



Technical data (typ.)

+20°C, 24 V DC

Service voltage	10 ... 30 V DC
No-load current (max.)	25 mA
Housing dimensions	38 x 27 x 15 mm
Housing length	27 mm
Housing height	38 mm
Housing width	15 mm
Housing material	Plastic
Material	Plastic (Window)
Protection class	III, operation on protective low voltage
Operating principle	Retroreflective sensor
Evaluation	digital
Design	Cuboid design
Switching output	npn, 100 mA, NC
Light source	LED
Color	Red
Wavelength	630 ... 670 nm
Modulation	Clocked
Ambient light immunity	5 kLx
Switching distance	400 ... 4000 mm (R55), 900 ... 9000 mm (R 84), 1000 ... 10000 mm (R 100x100)

**206207****OR 6-41 K 4 N1-T3****Retroreflective sensor**

Technical data (typ.)	+20°C, 24 V DC
Range	400 ... 10000 mm
Referring reflector	Reflector R55 included
Sensitivity adjustment	Potentiometer
Switching frequency	500 Hz
Ambient temperature during operation	-25 ... +60 °C
Protection type	IP 67
Connection	Connector, M8, 3-pin
Connection cable	TK ...
More information / accessories	https://www.di-soric.com/206207