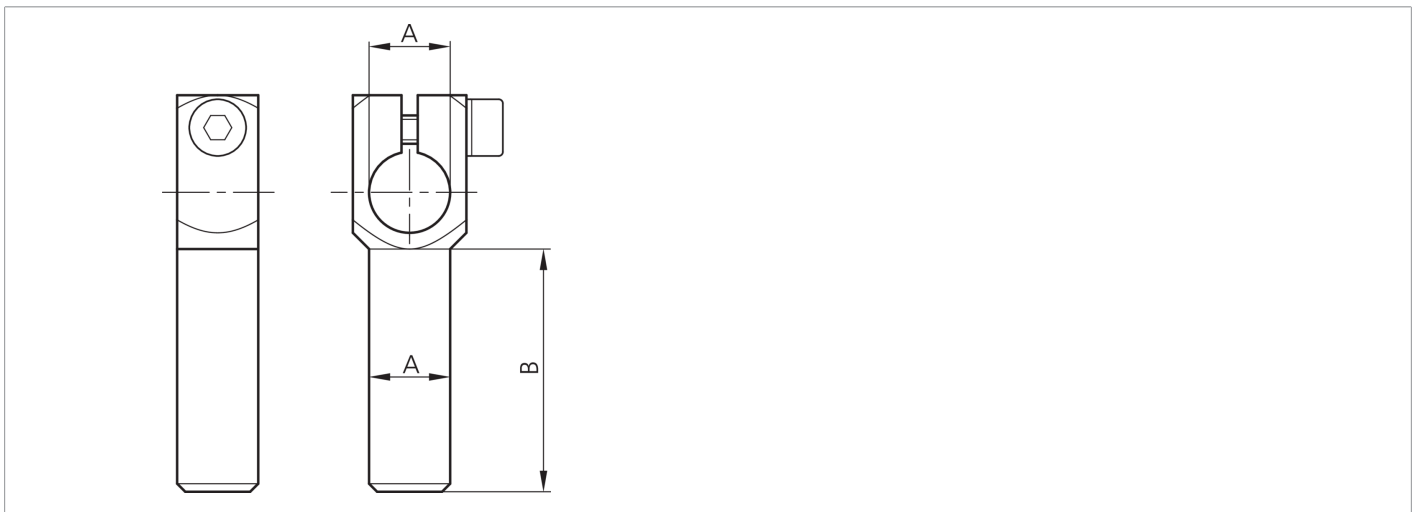
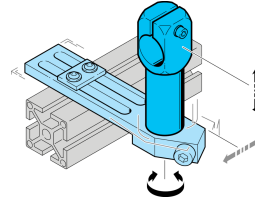




203894
SH-WKA-10-10-90
Angle arm

- Highly flexible versatile mounting system
- Universal mounting
- Stepless adjustment
- Robust design



| Technical data (typ.) | | +20°C |
|--------------------------------|--|---|
| Diameter | | A: 10 mm |
| Dimension | | B: 90 mm |
| Housing material | | Metal |
| Component | | Angle arm |
| To be used for | | Clamping pin 10 mm |
| Product series | | Z-UBT-KL-MS Assembly system |
| More information / accessories | | https://www.di-soric.com/203894 |