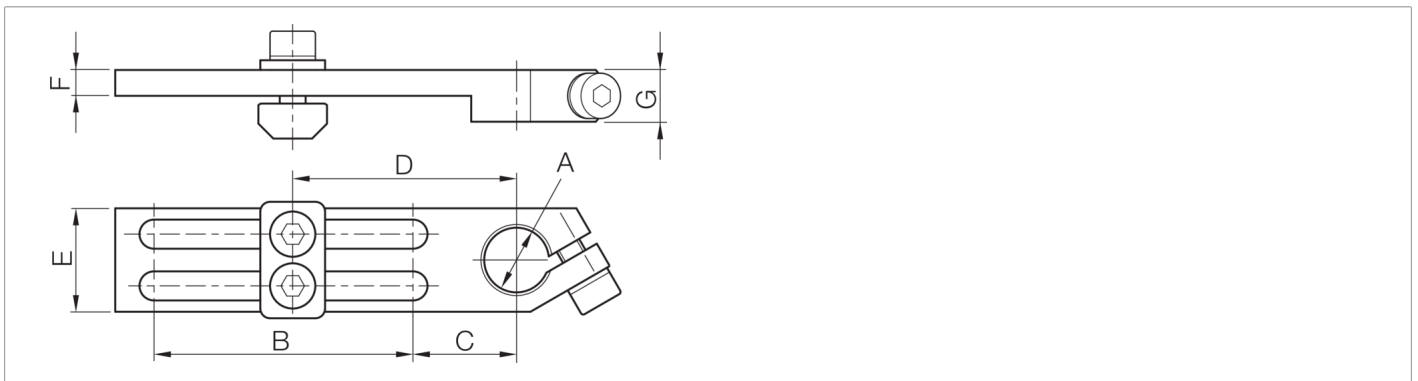
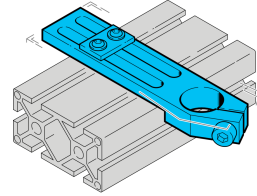




203886
SH-WSL-L-10-40-U
Angle clamp

- Highly flexible versatile mounting system
- Universal mounting
- Stepless adjustment
- Robust design



Technical data (typ.)	+20°C
Diameter	A: 10 mm
Distance dimension	C: 16 mm
Distance dimension	D: 36 mm
Distance dimension	E: 16 mm
Distance dimension	F: 4 mm
Distance dimension	F: 8 mm
Dimension	B: 40 mm
Housing material	Metal
Component	Angle clamp
To be used for	Clamping pin 10 mm
Product series	Z-UBT-KL-MS Assembly system
More information / accessories	https://www.di-soric.com/203886