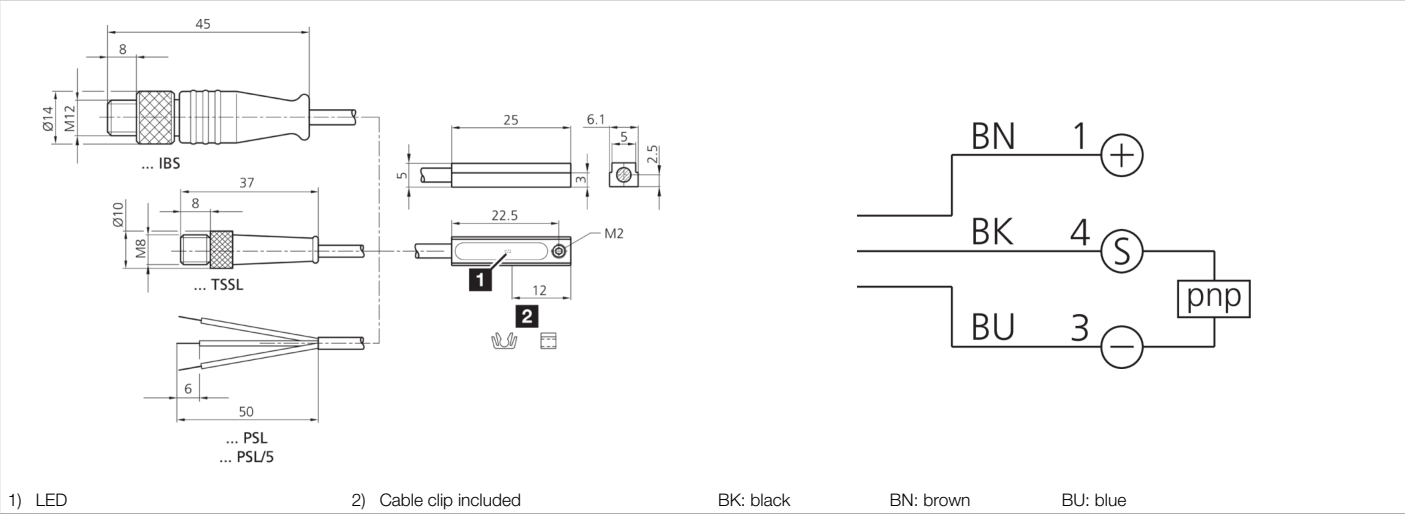
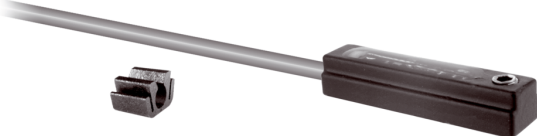




201145 MZET 25 PSLK Cylinder sensor

- For pneumatic cylinders with T-groove
- Metal casing
- Fully electronic
- High reproducibility
- High protection type
- Accessories available for mounting on round, tie rod and profile cylinders



Function									
									CE UK CA I

Technical data (typ.)		+20°C, 24 V DC	
Current-carrying capacity		200 mA, short-circuit-proof, polarity-safe	
Service voltage		10 ... 30 V DC	
No-load current (max.)		10 mA	
Insulation voltage endurance		500 V	
Cylinder groove		T-groove, insertion in lateral direction of groove	
Mounting		Locking screw (Allen screw SW 1.5 mm)	
Housing material		Die-cast zinc	
Material of cable		Polyurethane	
Protection class		III, operation on protective low voltage	
Switching output		pnp, 200 mA, NO, short-circuit-proof	
Voltage drop (max.)		2 V	
Switching capacity		< 6 W (30 V, 200 mA)	
Reproducibility		0.1 mm	
Display		LED yellow - Output signal	
Switching frequency		1000 Hz	
Ambient temperature during operation		-25 ... +70 °C	
Protection type		IP 68 (Device and cable) / IP 67 (Connection plug)	
Connection		Cable, 2.5 m, 3-pin	

More information / accessories <https://www.di-soric.com/201145>