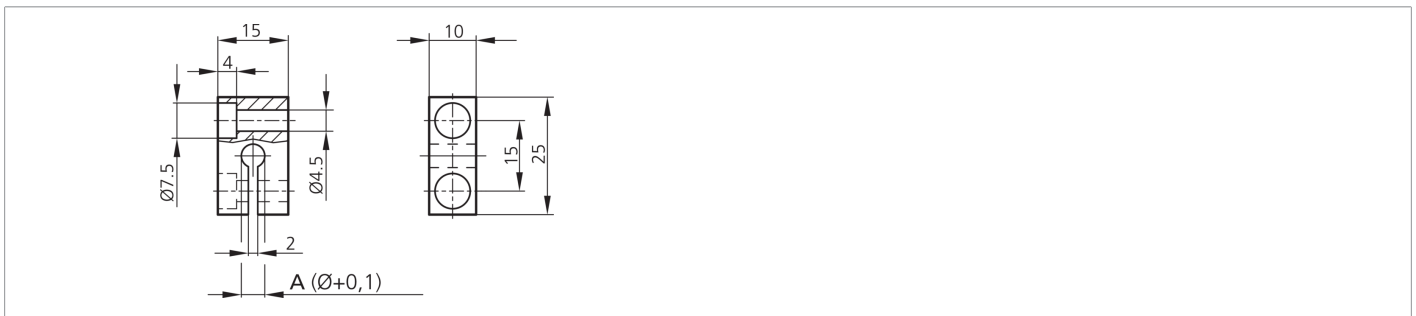




**200798**  
**KB 5**  
**Terminal block**

- Circular clamping
- Robust housing
- Easy to install
- Quick commissioning



Technical data (typ.)	+20°C
Hole spacing	15 mm
Mounting	Hole, Locking screw
Housing dimensions	15 x 10 x 25 mm
Clamping diameter	A: 5.0 mm
Housing material	Aluminum (Black, Anodized)
Component	Terminal block
Design	Cuboid design
Product series	Z-UBT-KL-MS Assembly system
More information / accessories	<a href="https://www.di-soric.com/200798">https://www.di-soric.com/200798</a>